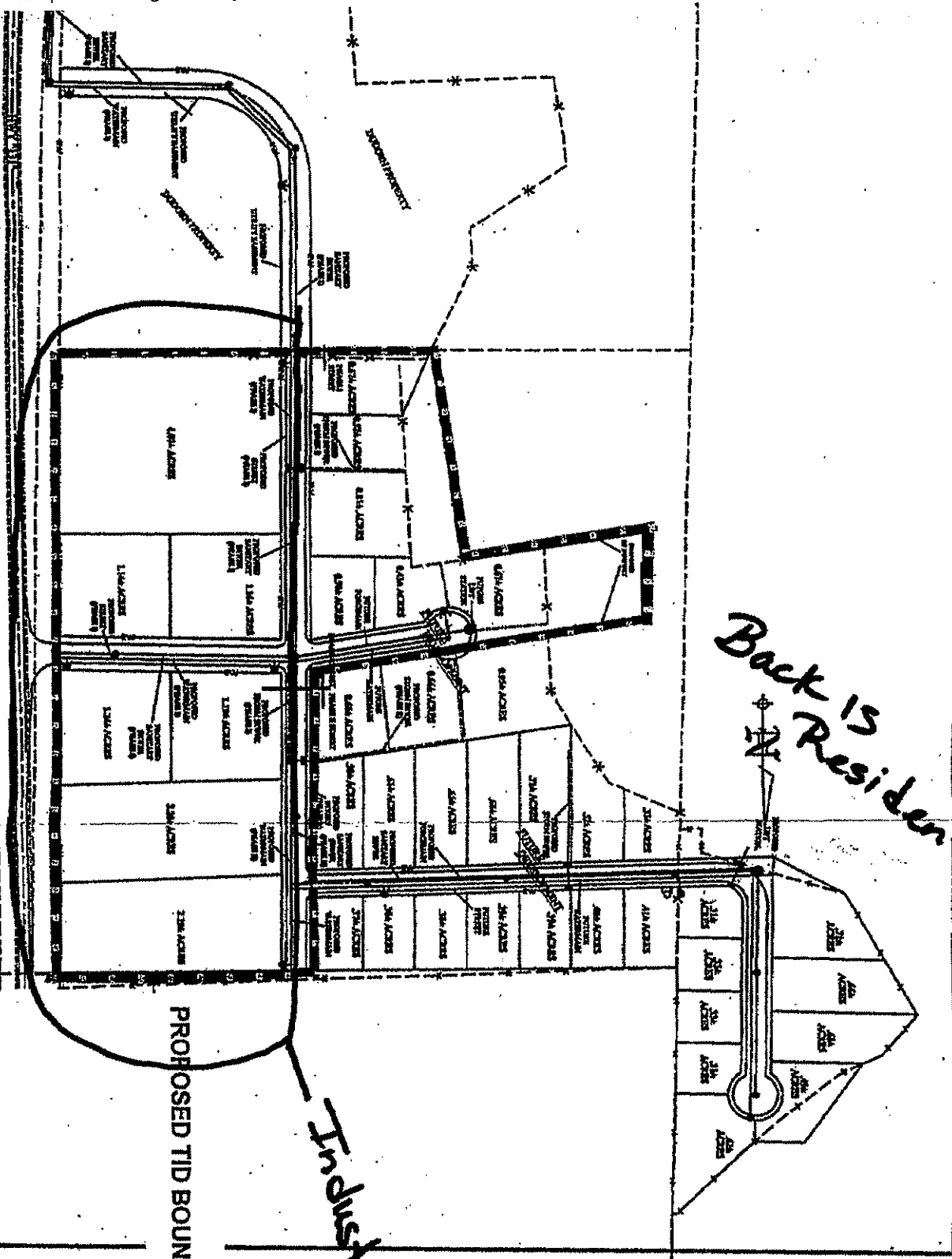


Attention: Matt
326-0226

ALLEGRA ENGINEERING LTD.
PROFESSIONAL AND CIVIL ENGINEERING
1000 W. 10th Street, Suite 100
Gays Mills, PA 17041
Tel: 610-338-1111

HWY 131 N



PROPOSED TID BOUNDARY

Industrial | TIF

Back is Residential